

## MAINSTREAMING SOCIAL INCLUSION

Kevin P O'Kelly  
and  
Izabela Litewska

## BACKGROUND

- Funded by European Commission through Transnational Exchange Programme (TEP)
- Part of the Community Action Programme on Social Exclusion
- Open to EU, Accession and EEA Member States
- MSI is one of thirty-one projects funded through TEP in 2004-2005

## Mainstreaming Social Inclusion

- Project in two Phases:
  - Pilot Phase 2003
  - Main research Phase 2004-2005
- Phase I
  - Three Member States (FR; IRL; and PT); one Region (NI); and one NGO (EAPN)
  - Seven partner organisations
- Outcomes
  - Report
  - Seminar

## MSI PHASE II – 2004/2005

- More detailed study / research
- Four EU Member States (CZ; FR; IRL; PT); one Region (NI); one EEA country (NO); and one NGO (EAPN)
- Nine partner organisations

## Social Inclusion as a European Issue

- Evolution of EU focus on Social Inclusion
  - Luxembourg (European Employment Strategy)
  - Lisbon (Integration of EU policies – targets for 2010)
- Open Method of Co-ordination (OMC)
- National Action Plans against poverty and social exclusion (2001-2003; 2003-2005; 2006)
- Joint Inclusion Memoranda (2003-2004);
- Reports on Social Inclusion
- Streamlining

## What is Social Inclusion?

Definition from Joint Inclusion Report - 2004:

*The process which ensures that those at risk of poverty and social exclusion gain the opportunities and resources necessary to participate fully in economic, social and cultural life and to enjoy a standard of living and well-being that is considered normal in the society in which they live.*

## What is 'Mainstreaming'?

### Project definition:

*Mainstreaming social inclusion is the integration of poverty and social inclusion objectives, including an equality perspective, into all areas and levels of policy-making and that is promoted through the participation of public bodies, social partners, NGOs and other relevant actors.*



## Mainstreaming Social Inclusion

### Project covers three areas:

- Mainstreaming social inclusion into public policies
- Involvement and Participation for all in policy-making
- Evaluation of mainstreaming social inclusion



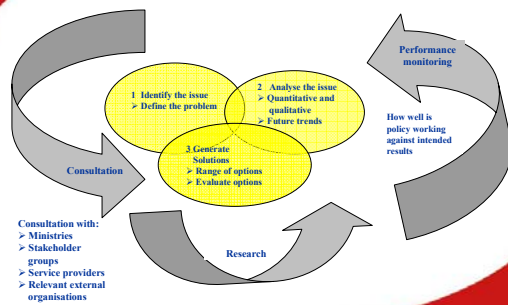
## Policy Development

### Three Policy Options for MSI:

1. Targeted policies (not mainstreaming but can lead to mainstreaming)
2. Global policies against poverty and social exclusion
3. Global policies not directly focused on the eradication of poverty and social exclusion



## EFFECTIVE POLICY DEVELOPMENT



## The Structures of Government in the participating countries

### CENTRALISED

Ireland  
Portugal  
Norway

### FEDERAL

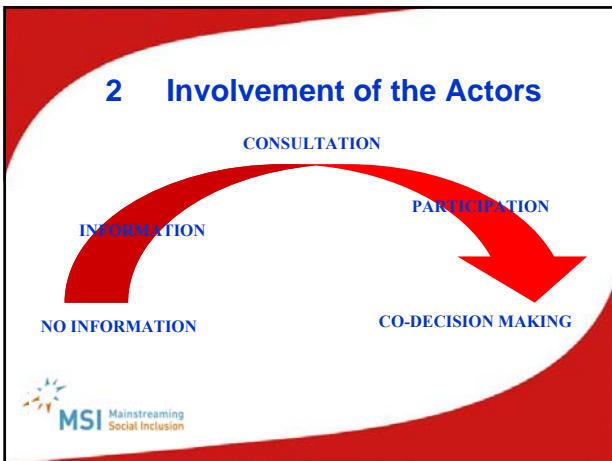
Czech Republic  
France  
Northern Ireland  
(UK)



## Resources for Policy-making

- Funding
- Skilled personnel
- Time





## Levels of Involvement

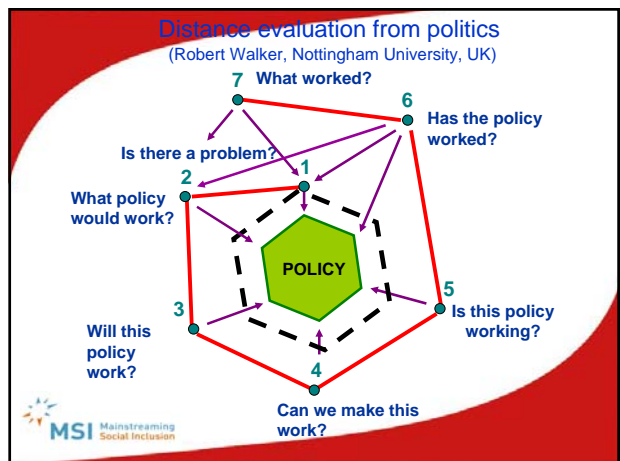
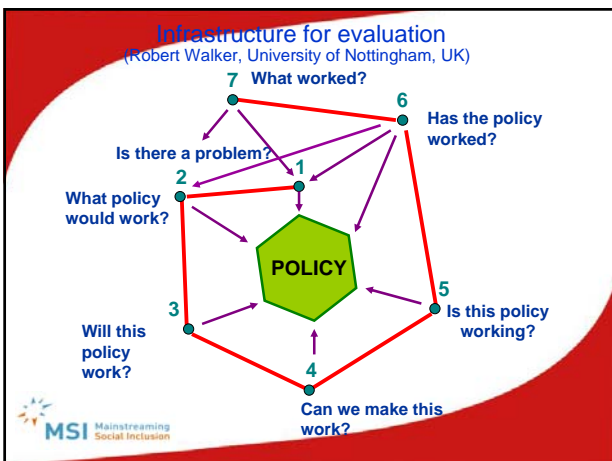
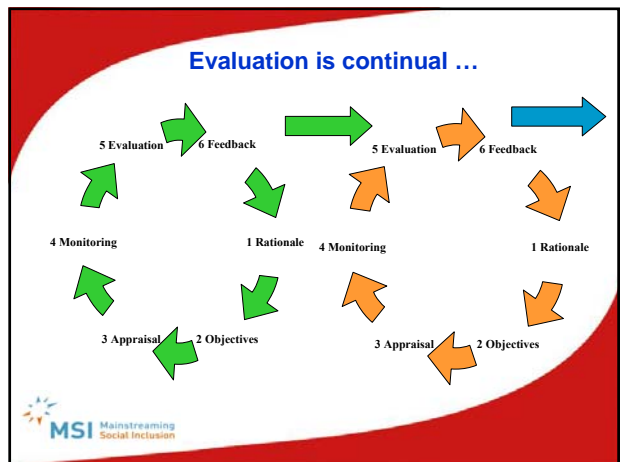
CONSULTATION	PARTICIPATION
National: Czech Rep.; France; Ireland; Portugal; Norway	Czech Rep.; France; Ireland; Portugal; Norway
Regional: Czech Rep.; France;	Czech Rep
Local: Czech Rep.; France; Ireland; Nth Ireland; Portugal; Norway	Czech Rep.; France; Ireland; Nth Ireland; Portugal; Norway

MSI Mainstreaming Social Inclusion

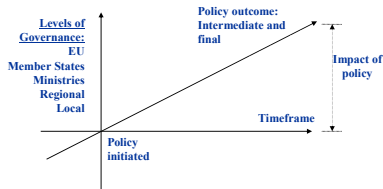
## 3 What is Evaluation?

*A systematic assessment of the operation and/or the outcomes of a programme or policy, compared to a set of explicit or implicit standards, as a means of contributing to the improvement of the programme or policy* (C H Weiss, 1998)

MSI Mainstreaming Social Inclusion



## Theory of Change



## Levels of governance have:

- Different time horizons
- Different policy processes
- Different policy outcomes
- Different evaluative research questions
- Different levels of complexity
- Different units of analysis
- Therefore different (*combinations of*) methods

## How to Evaluate MSI?

- **Mainstreaming is a process**
- **A need for political commitment**
- **Involve ALL key stakeholders**
- **Realistic expectations of outcomes**

## MSI Question

*Can the Mainstreaming of Social Inclusion be measured?  
If so, does it have an impact on the policy process and outcomes?*

- European level: NAPs/inclusion & OMC
- Member State level: Implementation level of NAPs/inclusion

## Framework for Evaluation – Three Policy Options

Targeted policies against poverty and social exclusion	Global policies against poverty and social exclusion	Global policies not directly focused on the eradication of poverty and social exclusion
May Lead to Mainstreaming	Mainstreaming	Can be Mainstreamed

## Framework for Evaluation

Provides a measurement of:

- The effectiveness of implementing mainstreaming social inclusion into public policy-making
- The effectiveness of mainstreaming social inclusion on policy outcomes.

### Pilot Evaluation Study

- Tested in the five partner countries, Nth Ireland and in EAPN national affiliate organisations
- Asks:
  - Is there Political Leadership?
  - Is there Administrative Leadership?
  - What Specialists / Skills are available?
  - What structures are in place?
  - Is there adequate data available?
  - What arrangements are in place for the engagement / participation of people experiencing poverty?



### Conclusions

- ◻ There is now a common understanding of *Mainstreaming social inclusion*
- ◻ *Mainstreaming social inclusion* is a process
- ◻ How *Mainstreaming social inclusion* is implemented is dependent on government and administrative structures and the allocation of resources



### Conclusions

- ◻ For *Mainstreaming social inclusion* to have an impact, there needs to be:
  - ◻ Political commitment
  - ◻ Social consensus
  - ◻ Co-ordination of policies
  - ◻ Mechanisms for participation
  - ◻ Adequate resources



### Conclusions

- ◻ An evaluation framework can provide agreed comparisons across the Member States
- ◻ *Mainstreaming* is understood but, in practice, it is less well understood



### Outcomes from Phase II

- ◻ Book
  - *Better Policies, Better Outcomes – Promoting Mainstreaming Social Inclusion*
- ◻ Summary leaflet in five languages
- ◻ Website
  - 'How to' tool for use by practitioners – policy-makers; service providers; NGOs; etc.



### Further research

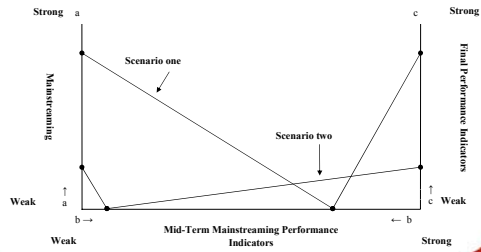
- Research questions developed during MSI:
- 1) Can mainstreaming of social inclusion be measured?
  - 2) If so, does it have an impact on the policy process and outcomes?



- ❑ Follow up MSI pilot evaluation study
- ❑ Evaluation on how *mainstreaming social inclusion* is incorporated into public policies
- ❑ Focus on NAP/inclusion process
- ❑ Study of all levels of governance to determine a scale to measure the concept



### A Mainstreaming Scale



### Proposed Methodology

- ❑ A survey using the revised evaluation questionnaire
- ❑ Target categories: senior, middle management to service providers
- ❑ A series of interviews with key actors in each participating Member State on main elements covered by the questionnaire with focus on Lisbon policy areas
- ❑ Good practice case studies



Thank You

